

# SanMar

## Product Integration Guide

Product Information – Inventory – Pricing – Daily Shipment Status – Invoicing

## Table of Contents

|  |    |
|--|----|
| Onboarding Process .....                                       | 3  |
| Product Information Overview .....                             | 5  |
| How to open .txt files in Excel .....                          | 5  |
| Brand Restrictions.....  | 6  |
| Map Pricing.....   | 6  |
| Global Trade Item Numbers (GTIN) .....                         | 6  |
| Hemmed Pants .....   | 6  |
| The SanMar Data Library - Product Information and Images ..... | 7  |
| Data Library Images Folders .....                              | 7  |
| SanMar Data Library File Names .....                           | 7  |
| SanMar FTP Server Data .....                                   | 8  |
| FTP (File Transfer Protocol) Client Information .....          | 8  |
| FTP Daily Product Information Files .....                      | 9  |
| SanMar SDL Files (SanMar Data Library) .....                   | 9  |
| SanMar EPDD Files (Electronic Product Data Download).....      | 11 |
| SanMar PDD & Catalog Files .....                               | 13 |
| Daily Inventory & Sales Pricing Files .....                    | 15 |
| Shopify Website Formatted File .....                           | 17 |
| Daily files created by request.....                            | 19 |
| Special Pricing Files .....                                    | 19 |
| Daily Shipment Status File (Advance Ship Notification) .....   | 21 |
| Daily Invoice Text File .....                                  | 22 |
| Daily Invoice Excel File .....                                 | 23 |
| EDI-810 Standard Daily Invoice File .....                      | 24 |
| Change Log .....   | 26 |

## Onboarding Process

### FTP / Web Services Integration Onboarding steps

1. Initiate the onboarding process by emailing your request and SanMar Customer Number to [sanmarintegrations@sanmar.com](mailto:sanmarintegrations@sanmar.com).
2. SanMar will send you an integration agreement for e-signature along with the integration documentation. Currently SanMar does not charge for integration access; however, we do require the company Owner or other Authorized Signatory to sign our Integration Agreement.
3. Once SanMar receives the signed agreement, onboarding for FTP and/or Web Services access should be completed within 1-2 business days. Upon completion, SanMar will send an email with access instructions, best practices, and a secure link to your FTP credentials.

*Please note:*

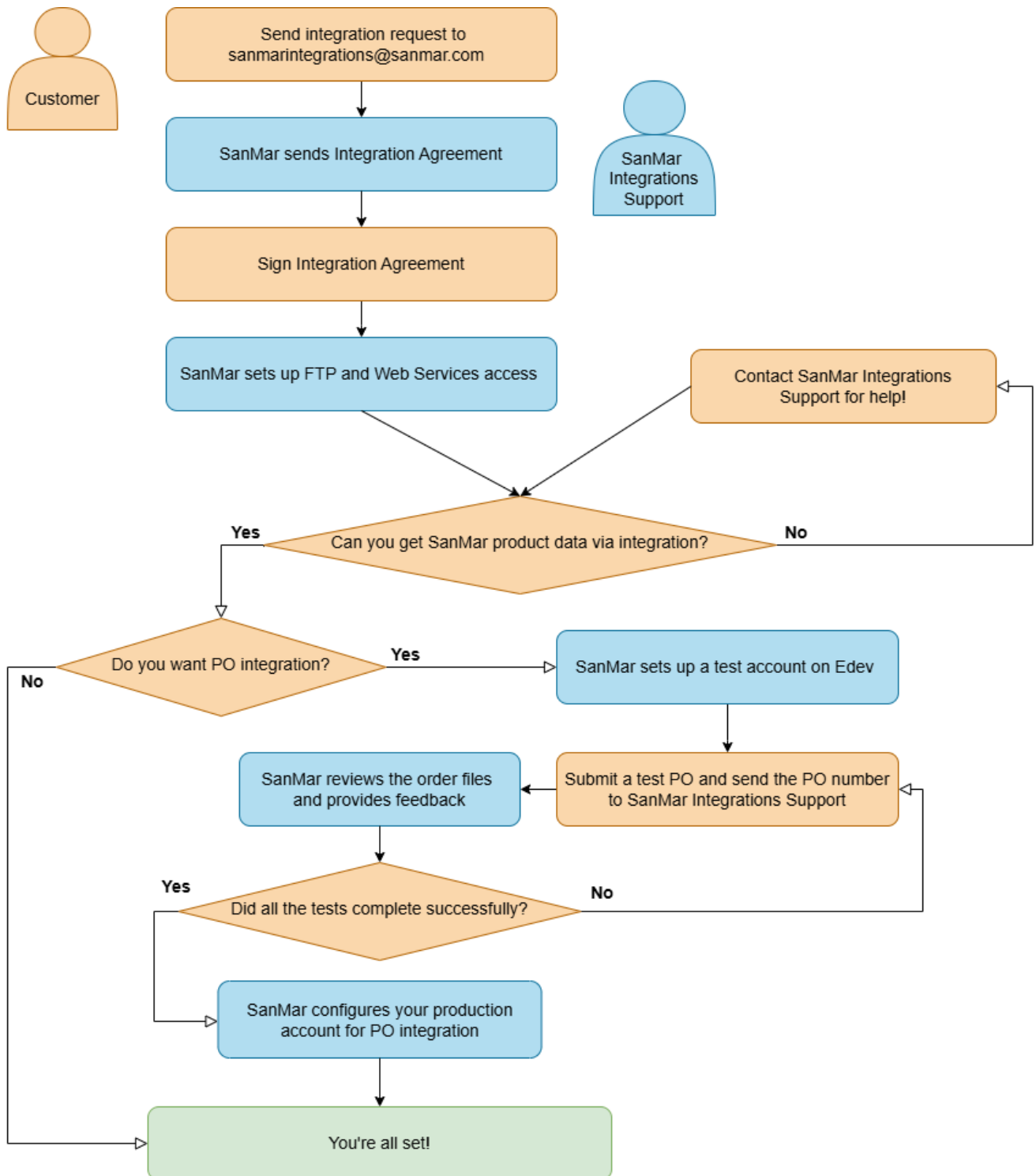
- Your FTP credentials are different from the Web Services credentials. After onboarding is complete, your SanMar.com username and password will work to authenticate production PromoStandards and SanMar Web Service APIs.

### Purchase Order Integration Onboarding steps

1. Once your account has been onboarded for FTP and/or Web Services access and you have verified your access to SanMar product data, you may request Purchase Order integration.
2. Upon receiving a PO integration request, SanMar will set up a test account for you in our Edev environment within 2-3 business days. SanMar will provide a secure one-time access link to retrieve your Web Services user credentials for the Edev environment.
3. SanMar requires testing on Edev to be completed using an address you intend to use in production and for you to submit an order with multiple lines. Additional testing may be required if you plan to ship using the PSST ship-via or based on your account. Refer to our PO Integration guide for details.
4. Once you have submitted a test PO, please send an email with your PO number to the SanMar Integration Support team ([sanmarintegrations@sanmar.com](mailto:sanmarintegrations@sanmar.com)). SanMar will review the order files and provide further guidance as needed.
5. Once testing has completed on Edev, SanMar will request the username, shipping information, and payment method for the integrated PO configuration in production. Once those have been supplied, SanMar will configure your production account for integrated PO processing within 1-2 business days.

*The above timelines may extend depending on the complexity of your situation and testing needs.*

## Integration Onboarding Flowchart



## Product Information Overview

While using our product information we require that your database is updated regularly to reflect any changes that affect our available stock and pricing throughout the year as well as product evolution such as: Coming Soon, New, Regular, Active and Discontinued product statuses.

You can either use the SanMar Data Library or request access to our FTP server for additional data with inventory such as the SanMar\_EPDD.csv file (bulk inventory) or the sanmar\_dip.txt file (inventory by warehouse). If you are using our inventory and/or sale pricing information, we recommend daily or *weekly* updates otherwise, monthly to quarterly updating is recommended. Please note that our entire catalog is updated annually at the end of every July and there are additional product releases in January, March and May, which also include discontinued product changes.

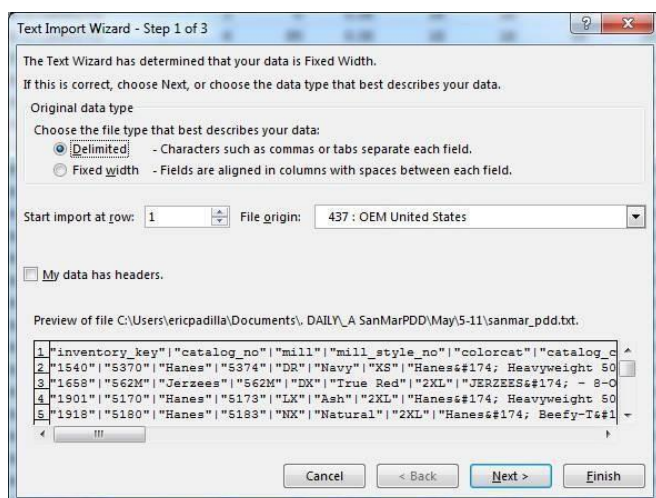
In order to create the functionality you desire, you may need to use a combination of our data files or web services data.

All our files contain our inventory\_key and size index or unique\_key (which is created by the inventory\_key and size index appended to the end). This is our unique identifying number for each style, color and size combination for every product that SanMar sells and matches to the unique\_key field in our product information files. This unique identifying number may require mapping data from different files with the unique\_key or inventory\_key and size index to create the relationship to the additional product information. We also recommend downloading our product images and linking to them on your local server.

### How to open .txt files in Excel

You will need have excel already open, then browse and select the.txt file you would like to open.

Once it opens, it will give delimiter options, select Delimited then click Next. In the next window, select 'other' and enter a pipe "|" (Shift + \ Key), then click Finish. Once the file is opened you can save it as an XLS or CSV file.



## Brand Restrictions

The following brands are prohibited from being sold without embellishment on any third party or direct to consumer website, including Amazon, eBay, and Craigslist:

|                 |             |                |               |
|-----------------|-------------|----------------|---------------|
| Brooks Brothers | Eddie Bauer | OGIO           | Tommy Bahama  |
| Carhartt        | New Era     | Stanley/Stella | Travis Mathew |
| Cotopaxi        | Nike        | The North Face |               |

## Map Pricing

All customers must adhere to our Minimum Advertised Pricing (MAP) policy. Per our sales policy, customers may not advertise or promote products at discounts greater than 10% off MSRP or SanMar promotional pricing for retail items or 20% for our private label brands. Customers may not advertise any discount on bags by OGIO.

### MAP = 10% OFF MSRP

|                     |                  |
|---------------------|------------------|
| Alternative Apparel | Outdoor Research |
| Brooks Brothers     | Red House        |
| Bulwark             | Red Kap          |
| Champion            | Russell Outdoors |
| Cotopaxi            | Spacecraft       |
| Eddie Bauer         | Stanley/Stella   |
| New Era             | tentree          |
| Nike                | The North Face   |
| OGIO                | Travis Mathew    |
|                     | Wink             |

### MAP = 20% OFF MSRP

|                    |
|--------------------|
| AllMade            |
| CornerStone        |
| District           |
| Mercer+Mettle      |
| Port & Company     |
| Port Authority     |
| Sport-Tek          |
| Volunteer Knitwear |

### MAP = MSRP

|              |
|--------------|
| Carhartt     |
| Nike Bags    |
| Tommy Bahama |

### No MAP

|                   |
|-------------------|
| A4                |
| Anvil             |
| Bella+Canvas      |
| Comfort Colors    |
| Fruit of the Loom |
| Gildan            |
| Hanes             |
| Jerzees           |
| Next Level        |
| Rabbit Skins      |

## Global Trade Item Numbers (GTIN)

GTIN's for the following brands are available in the **SanMar\_SDL\_N.csv** and **SanMar\_EPDD.csv** files on our FTP server:

|                  |                   |                  |                 |                    |
|------------------|-------------------|------------------|-----------------|--------------------|
| A4               | Carhartt          | Gildan           | Port & Co       | Sport-tek          |
| Allmade          | Champion          | Hanes            | Port Authority  | Stanley/Stella     |
| Alternative      | Comfort Colors    | Jerzees          | Precious Cargo  | tentree            |
| American Apparel | Cornerstone       | Mercer+Mettle    | Rabbit Skins    | The North Face     |
| Anvil            | Cotopaxi          | Next Level       | Red House       | Tommy Bahama       |
| Bella+Canvas     | District          | Nike             | Red Kap         | TravisMathew       |
| Brooks Brothers  | Eddie Bauer       | Ogio             | Russel Outdoors | Volunteer Knitwear |
| Bulwark          | Fruit of the Loom | Outdoor Research | Spacecraft      | Wink               |

## Hemmed Pants

SanMar does not provide integrated data or support integrated PO submittal for hemmed pants due to additional sourcing and processing fees. Hemmed pants can be ordered via our other ordering channels (SanMar.com / Phone / Email). Unhemmed pants are part of integrated data-feeds and are supported for integrated PO submittal.

## The SanMar Data Library - Product Information and Images

The data library on sanmar.com contains our product data and is customizable to meet your individual product needs. If you are interested in inventory data, please contact us. Here is the link to the data Library:

<https://www.sanmar.com/resources/electronicintegration/sanmardatalibrary>

The SanMar Data Library includes the following:

- ✦ Style numbers & Colors Names
- ✦ Product Descriptions, Categories & Product Weight in lbs.
- ✦ Piece, Dozens, Case, MSRP & MAP Pricing
- ✦ Product SKUs for each style, color & size combination

### Data Library Images Folders

- ✦ Color Product Image  
(Front model) medium-resolution (1200 X 1800, 300 DPI) images and image URLs
- ✦ Thumbnails, Color Squares & Brand Logos
- ✦ Spec Sheets & Product Measurements

### SanMar Data Library File Names

Based on preferences selected when downloading the data

- ✦ **SanMar\_SDL\_DS.zip** – do not check any option
- ✦ **SanMar\_SDL\_DSI.zip** - do not check any option but Include Images
- ✦ **SanMar\_SDL\_S.zip** - Do not include Duplicates.
- ✦ **SanMar\_SDL\_SI.zip** - Include Images & Do not include Duplicates
- ✦ **SanMar\_SDL\_DI.zip** - Include images & do not include trademark or registered symbols
- ✦ **SanMar\_SDL\_N.zip** - Do Not Include Duplicates & Do not include trademark or registered symbols
- ✦ **SanMar\_SDL\_I.zip** - Include Images, do not Include Duplicates & Do not include trademark or registered symbols

## SanMar FTP Server Data

### FTP Daily Product Data

- ✦ Product SKUs, Style numbers, Colors, Descriptions, Categories & Weights in lbs.
- ✦ Bulk Inventory & Inventory by warehouse
- ✦ Piece, Dozens, Case, MSRP & MAP Pricing
- ✦ Shopify Web Store File

### FTP Images Folders

- ✦ Product Images: Front & Back Model, Front & Back Flat Images
- ✦ Thumbnails, Color Squares & Brand Logos
- ✦ PDF Spec Sheets & Product Measurements

### Optional Daily Files

These are files that can be configured upon request.

- ✦ Daily Pricing CSV File
- ✦ Daily Invoice Txt File
- ✦ Daily Order Status Text File
- ✦ Daily Invoice Excel File
- ✦ EDI Standard 810 Invoice File  
Version: ANSI X1200401

## FTP (File Transfer Protocol) Client Information

An FTP client is software which uses the File Transfer Protocol (FTP) to upload or download files on our server. Here is the link to download an FTP Client of your choice. <https://tinyurl.com/FTP-clients>

### FileZilla Download & Settings

FileZilla is a popular FTP client that is used by many of our customers and needs some of the default settings changed to connect to our FTP server.

Download FileZilla <https://filezilla-project.org/download.php?type=client>

**Go to File -> Site Manager then Click on 'New Site'**

**Host:** [ftp.sanmar.com](http://ftp.sanmar.com) **PORT:** 2200

**Protocol:** SFTP – SSH File Transfer Protocol

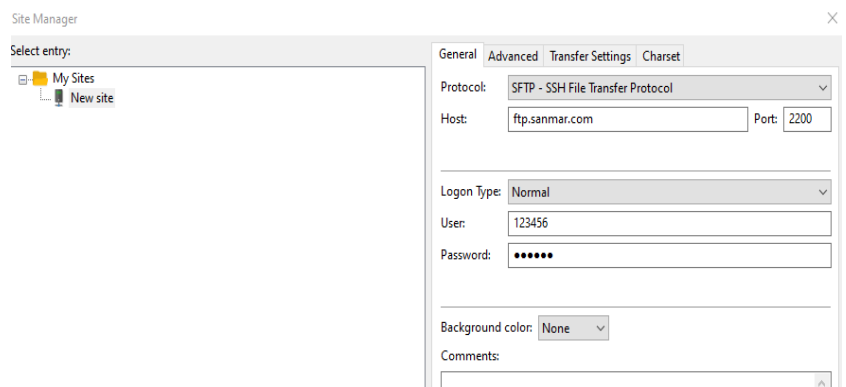
The FTP server is not compatible with **TLS** protocol  
Transport Layer Security

**Logon Type:** Normal

**User:** (Your Customer Number)

**Password:** (FTP Password)

Your sanmar.com username and password will NOT work on our FTP server.





## FTP Daily Product Information Files

The following data files are in the **SanMarPDD** FTP folder and are updated nightly and are completed by 6am PST. Our main product information files are the **SanMar\_SDL\_N.csv** and the **SanMar\_EPDD.csv** files. Both files have all the basic product data including product descriptions, pricing, and item weight in lbs. The SanMar\_EPDD file has bulk inventory, separate main category and subcategory data as well as front model, back model, front flat and back flat image names that match the images names in the EPDD.zip images folders. There are duplicated unique keys in the SanMar\_EPDD file due to multiple main category and subcategories.

**Please Note:** Product data with a “Coming Soon” Product Status may be incomplete until the Product Status is updated to “New” and available for purchase.

### SanMar SDL Files (SanMar Data Library)

The SDL\_N file has the main category and subcategory data together in the main category column separated by semi-colons, however there are no duplicated unique keys in this file. This file has image URL's and product image names that match with the image names downloaded from the data library.

- ✦ **Sanmar\_SDL\_N.csv:** Basic product data including product descriptions, pricing and item weight in lbs. (No Inventory)
- ✦ **Sanmar\_SDL\_N.zip:** Zipped SDL file (Contains no other files or folders).
- ✦ **SanMar\_SDL\_DI.csv:** Basic product data including product descriptions, pricing and item weight in lbs.
- ✦ **Sanmar\_SDL\_DI.zip:** Zipped SDL file (Contains medium resolution product Images 1200x1800, 300 DPI).

### SanMar SDL N.csv & SanMar SDL DI.csv - Comma delimited quote encapsulated files

| FIELD ELEMENT       | DESCRIPTION  |
|---------------------|--|
| UNIQUE_KEY          | Unique Identifier created as combination of INVENTORY_KEY & SIZE_INDEX |
| PRODUCT_TITLE       | Includes Manufacturer's name   |
| PRODUCT_DESCRIPTION | Description of product features  |
| STYLE#              | Mill style # same as style number used in catalogs                     |
| AVAILABLE_SIZES     | Sizes available  |
| BRAND_LOGO_IMAGE    | File name of Brand image such as Port Authority                        |
| THUMBNAIL_IMAGE     | File name of Small image for Lifestyle-Model picture                   |
| COLOR_SWATCH_IMAGE  | Individual color Image available in a style.                           |
| PRODUCT_IMAGE       | File name of Lifestyle-Model picture jpg for web sites                 |
| SPEC_SHEET          | PDF or Word document listing specifications.                           |
| PRICE_TEXT          | How price applies such as Price applies to.....                        |
| SUGGESTED_PRICE     | Recommended retail   |

|                               |  |
|-------------------------------|--|
| CATEGORY_NAME                 | Major categories such as Tee Shirts, Knit Shirts, Woven                                  |
| SUBCATEGORY_NAME              | Such as 100% Cotton Tee or Crewneck Sweatshirts or Camp Shirts                           |
| COLOR_NAME                    | Full Name of color   |
| COLOR_SQUARE_IMAGE            | File name of Image which creates the square in a color swatch.                           |
| COLOR_PRODUCT_IMAGE           | File name of Regular (usually folded) image  |
| COLOR_PRODUCT_IMAGE_THUMBNAIL | File name of Small picture of (usually folded) items                                     |
| SIZE                          | Size of item   |
| PIECE_WEIGHT                  | Approximate Weight Per Piece – lbs. /piece – Final weight determined at shipping.        |
| PIECE_PRICE                   | Price Per Piece based upon a purchase of 5 pieces or less of a single style & Color      |
| DOZENS_PRICE                  | No longer Available - Displays Price Per Piece   |
| CASE_PRICE                    | Price per piece based upon Case Purchase by Size / Color / Style                         |
| PRICE_GROUP                   | No longer Available - Displays NA  |
| CASE_SIZE                     | Total # of pieces of a single style /color/ size per case                                |
| INVENTORY_KEY                 | SanMar Proprietary Inventory Key   <b>Used for text file order submission</b>            |
| SIZE_INDEX                    | Size category number for each size grouping   <b>Used for text file order submission</b> |
| SANMAR_MAINFRAME_COLOR        | Abbreviated color name   <b>Used for web services order submission</b>                   |
| MILL                          | Brand Name of Manufacturer   |
| PRODUCT_STATUS                | Displays Coming Soon, New, Regular and Discontinued Style statuses                       |
| COMPANION_STYLES              | Related Youth and Ladies Styles when available   |
| MSRP                          | Manufactures Suggested Retail Price  |
| MAP_PRICING                   | Minimum Advertised Pricing (MAP)   |
| FRONT_MODEL_IMAGE_URL         | Front Model Image - 1200x1800px jpg with model   |
| BACK_MODEL_IMAGE_URL          | Back model image URL- 1200x1800px jpg with model   |
| FRONT_FLAT_IMAGE_URL          | Front flat Image URL - 1200x1800px jpg without model                                     |
| BACK_FLAT_IMAGE_URL           | Back flat image URL - 1200x1800px jpg without model                                      |
| PRODUCT_MEASUREMENT           | PDF document listing flat product measurements.  |
| PMS_COLOR                     | Pantone or PMS (Pantone Matching System) color   |
| GTIN                          | Product GTIN # (Not all SanMar Products are assigned GTINS)                              |
| DECORATOR_SPEC_SHEET          | Decoration Spec Sheet URL  |

## SanMar EPDD Files (Electronic Product Data Download)

- ✦ **SanMar\_EPDD.csv:** Basic product data including product descriptions, pricing, item weight in lbs., and Inventory.
- ✦ **SanMar\_EPDD.zip:** Contains the EPDD file and back model, front flat, back flat images (1200x1800, 300 DPI).

### Sanmar\_EPDD.csv - Comma delimited quote encapsulated files

| FIELD ELEMENT                 | DESCRIPTION  |
|-------------------------------|--|
| UNIQUE_KEY                    | Unique Identifier created as combination of INVENTORY_KEY & SIZE_INDEX                 |
| PRODUCT_TITLE                 | Includes Manufacturer's name   |
| PRODUCT_DESCRIPTION           | Description of product features  |
| STYLE#                        | Mill style # same as style number used in catalogs                                     |
| AVAILABLE_SIZES               | Sizes available  |
| BRAND_LOGO_IMAGE              | File name of Brand image such as Port Authority  |
| THUMBNAIL_IMAGE               | File name of Small image for Lifestyle-Model picture                                   |
| COLOR_SWATCH_IMAGE            | Individual color Image available in a style.   |
| PRODUCT_IMAGE                 | File name of Lifestyle-Model picture jpg for web sites                                 |
| SPEC_SHEET                    | PDF or Word document listing specifications.   |
| PRICE_TEXT                    | How price applies such as <i>Price applies to.....</i>                                 |
| SUGGESTED_PRICE               | Recommended retail   |
| CATEGORY_NAME                 | Major categories such as Tee Shirts, Knit Shirts, Woven                                |
| SUBCATEGORY_NAME              | Such as 100% Cotton Tee or Crewneck Sweatshirts or Camp Shirts                         |
| COLOR_NAME                    | Full Name of color   |
| COLOR_SQUARE_IMAGE            | File name of Image which creates the square in a color swatch.                         |
| COLOR_PRODUCT_IMAGE           | File name of Regular (usually folded) image  |
| COLOR_PRODUCT_IMAGE_THUMBNAIL | File name of Small picture of (usually folded) items                                   |
| SIZE                          | Size of item   |
| QTY                           | Quantity available as of this download – all warehouses combined                       |
| PIECE_WEIGHT                  | Approximate Weight Per Piece – lbs. /piece – Final weight determined at shipping.      |
| PIECE_PRICE                   | Price Per Piece based upon a purchase of 05 pieces or less of a single style & Color   |
| DOZENS_PRICE                  | No longer Available - Displays Price Per Piece   |
| CASE_PRICE                    | Price per piece based upon Case Purchase by Size / Color / Style                       |
| PRICE_GROUP                   | No longer Available - Displays NA  |
| CASE_SIZE                     | Total # of pieces of a single style /color/ size per case                              |
| INVENTORY_KEY                 | SanMar Proprietary Inventory Key <b>Used for text file order submission</b>            |
| SIZE_INDEX                    | Size category number for each size grouping <b>Used for text file order submission</b> |

|                               |  |
|-------------------------------|--|
| <b>SANMAR_MAINFRAME_COLOR</b> | Abbreviated color name <b>Used for text file order submission</b>  |
| <b>MILL</b>                   | Brand Name of Manufacturer   |
| <b>PRODUCT_STATUS</b>         | Displays Coming Soon, New, Regular and Discontinued Style Statuses |
| <b>COMPANION_STYLES</b>       | Related Youth and Ladies Styles when Available                     |
| <b>MSRP</b>                   | Manufactures Suggested Retail Price                                |
| <b>MAP_PRICING</b>            | Minimum Advertised Pricing (MAP)                                   |
| <b>FRONT_MODEL_IMAGE_URL</b>  | Front Model Image URL - 1200x1800px jpg with model                 |
| <b>BACK_MODEL_IMAGE</b>       | Back model image File Name- 1200x1800px jpg with model             |
| <b>FRONT_FLAT_IMAGE</b>       | Front flat Image File Name - 1200x1800px jpg without model         |
| <b>BACK_FLAT_IMAGE</b>        | Back flat image File Name - 1200x1800px jpg without model          |
| <b>PRODUCT_MEASUREMENT</b>    | PDF document listing flat product measurements.                    |
| <b>PMS_COLOR</b>              | Pantone or PMS (Pantone Matching System) color                     |
| <b>GTIN</b>                   | Product GTIN # (Not all SanMar Products are assigned GTINS)        |
| <b>DECORATOR_SPEC_SHEET</b>   | Decoration Spec Sheet URL  |

## SanMar PDD & Catalog Files

- ✦ **sanmar\_pdd.txt:** Basic product data including GTIN, product descriptions and extended product descriptions.
- ✦ **Catalog.txt:** Product data with extended product descriptions.
- ✦ **sanmar\_activeproductsexport.txt:** Product data with extended product descriptions.

---

### sanmar\_pdd.txt - Pipe delimited file - **Contains GTINS**

|    |   |                      |  |
|----|---|----------------------|--|
| 1  | A | inventory_key        | SanMar Product Identifier                      |
| 2  | B | catalog_no           | SanMar Catalog Style Number                    |
| 3  | C | mill                 | Mill Brand Name                                |
| 4  | D | mill_style_no        | Factory Style Number                           |
| 5  | E | colorcat             | No longer Available - Displays NA              |
| 6  | F | catalog_color        | Product Color                                  |
| 7  | G | size                 | Product Size                                   |
| 8  | H | description          | Product Description                            |
| 9  | I | extended_description | Extended Product Description                   |
| 10 | J | ea_price             | Price Per Piece                                |
| 11 | K | dz_price             | No longer Available - Displays Price Per Piece |
| 12 | L | dz_qty               | No longer Available - Displays Per Piece       |
| 13 | M | case_price           | Price Per Case                                 |
| 14 | N | case_qty             | Units in Full Case                             |
| 15 | O | catalog_page         | No longer Available - Displays 0               |
| 16 | P | weight               | Weight Per Piece in lbs.                       |
| 17 | Q | size_type            | Internal Item Size Code                        |
| 18 | R | size_index           | Product Size Identifier Code                   |
| 19 | S | steves_group         | No longer Available - Displays Unknown         |
| 20 | T | gtin                 | Global Trade Item Number                       |

---

### Catalog.txt - TAB Delimited file - **Contains GTINS**

|    |   |                      |  |
|----|---|----------------------|--|
| 1  | A | INVENTORY.KEY        | SanMar Product Identifier                  |
| 2  | B | CATALOG.NO           | SanMar Catalog Style Number                |
| 3  | C | MILL                 | Mill Brand Name                            |
| 4  | D | MILL STYLE#          | Factory Style Number                       |
| 5  | E | COLORCAT             | No longer Available - Displays NA          |
| 6  | F | CATALOG.COLOR        | Product Color                              |
| 7  | G | SIZE                 | Product Size                               |
| 8  | H | DESCRIPTION          | Product Description                        |
| 9  | I | EXTENDED DESCRIPTION | Extended Product Description               |
| 10 | J | EA PRICE             | Price Per Piece                            |
| 11 | K | DZ PRICE             | No longer Available - Displays Piece Price |
| 12 | L | DZ QTY               | Unit Quantity for Dozens Pricing           |
| 13 | M | CASE PRICE           | Price Per Case                             |
| 14 | N | CASE QTY             | Units in Full Case                         |
| 15 | O | CATALOG PAGE         | No longer Available - Displays 0           |
| 16 | P | WEIGHT               | Weight Per Piece in lbs.                   |
| 17 | Q | SIZE TYPE            | Internal Item Size Code                    |
| 18 | R | INDEX                | Product Size Identifier Code               |
| 19 | S | STEVES.GROUP         | No longer Available - Displays Unknown     |
| 20 | T | GTIN                 | Global Trade Item Number                   |

---

**sanmar\_activeproductsexport.txt** - Pipe delimited file

|    |   |               |  |
|----|---|---------------|--|
| 1  | A | inventory_key | SanMar Product Identifier  |
| 2  | B | size_index    | Product Size Identifier Code   |
| 3  | C | catalog_no    | SanMar Catalog Style Number  |
| 4  | D | catalog_color | Mill Brand Name  |
| 5  | E | size          | Product Size   |
| 6  | F | Whse_No       | Warehouse Number: 1=Seattle WA, 2=Cincinnati OH, 3=Dallas TX, 4=Reno NV, 5=Robbinsville NJ, 6=Jacksonville FL, 7=Minneapolis MN, 12=Phoenix AZ, 31=Richmond VA |
| 7  | G | Quantity      | Quantity (500 max per warehouse shown)   |
| 8  | H | Piece_Weight  | weight per piece in lbs.   |
| 9  | I | Piece_Price   | Piece Price (1-5 Pieces)   |
| 10 | J | Dozens_Price  | No longer Available - Displays Piece Price   |
| 11 | K | Case_Price    | Case Price   |
| 12 | L | Case_Size     | Pieces in a Case   |
| 13 | M | Inventory_Key | SanMar Product Identifier (combined with size index makes up for a unique product)   |

## Daily Inventory & Sales Pricing Files

- ✦ **Sanmar\_dip.txt:** Current inventory data including sale dates/pricing, and inventory by warehouse, updated hourly.
- ✦ **Sanmar\_SaleItems.txt:** Current sale item product data

**Sanmar\_dip.txt** - Pipe delimited file. The Sanmar\_dip.txt file is updated **hourly**.

| #  | Column | Field Element       | Description  |
|----|--------|---------------------|--|
| 1  | A      | Inventory_Key       | SanMar Product Identifier (combined with size index makes up for a unique product)   |
| 2  | B      | Size_Index          | Product Size Identifier (combined with inventory key makes up for a unique product)  |
| 3  | C      | Catalog_No          | SanMar Catalog Number e.g. K420  |
| 4  | D      | Catalog_Color       | Color  |
| 5  | E      | Size                | Size   |
| 6  | F      | Whse_No             | Warehouse Number: 1-Seattle WA, 2-Cincinnati OH, 3-Dallas TX, 4-Reno NV, 5-Robbinsville NJ, 6-Jacksonville FL, 7-Minneapolis MN, 12-Phoenix AZ, 31-Richmond VA |
| 7  | G      | Quantity            | Quantity (500 max per warehouse shown)   |
| 8  | H      | Piece_Weight        | Weight per piece in lbs.   |
| 9  | I      | Piece_Price         | Piece Price (1-5 Pieces)   |
| 10 | J      | Dozens_Price        | No longer Available - Displays Piece Price   |
| 11 | K      | Case_Price          | Case Price   |
| 12 | L      | Case_Size           | Pieces in a Case   |
| 13 | M      | Each_sale_Price     | Sale Price Per Piece (if on sale)  |
| 14 | N      | Dozens_sale_price   | No longer Available - Displays Piece Price (if on sale)  |
| 15 | O      | Case_sale_price     | Sale Price Per Case (if on sale)   |
| 16 | P      | Sale_start_datetime | Sale Start Date (if on sale)   |
| 17 | Q      | Sale_end_datetime   | Sale End Date (if on sale)   |
| 18 | R      | Unique_key          | Unique Product Identifier (INVENTORY_KEY+SIZE_INDEX combined)  |
| 19 | S      | Discontinued_code   | Discontinued Code S=SanMar or M=Mill - if product discontinued   |
| 21 | U      | SALE_START_DATE     | Sale Start Date  |
| 22 | V      | SALE_END_DATE       | Sale End Date  |

## Sanmar\_SaleItems.txt - Pipe delimited file

| #  | Column | Field Element        | Description   | Field Length |
|----|--------|----------------------|---|--------------|
| 1  | A      | INVENTORY_KEY        | SanMar Product Identifier                               | Implied      |
| 2  | B      | CATALOG_NO           | SanMar Catalog Style Number                             | 10           |
| 3  | C      | MILL                 | Mill Brand Name   | 20           |
| 4  | D      | MILL_STYLE_NO        | Factory Style Number                                    | 10           |
| 5  | E      | COLORCAT             | No longer Available - Displays NA                       |              |
| 6  | F      | COLOR                | Product Color   | 14           |
| 7  | G      | SIZE                 | Product Size  | 10           |
| 8  | H      | DESCRIPTION          | Product Description                                     | 1024         |
| 9  | I      | EXTENDED_DESCRIPTION | Extended Product Description                            | 1024         |
| 10 | J      | EA_SALE_PRICE        | Sale Price Per Piece                                    | Implied      |
| 11 | K      | DZ_SALE_PRICE        | No longer Available - Displays Piece Price (if on sale) | Implied      |
| 12 | L      | DZ_QTY               | Unit Quantity for Dozens Pricing                        | Implied      |
| 13 | M      | CASE_SALE_PRICE      | Sale Price Per Case                                     | Implied      |
| 14 | N      | CASE_QTY             | Units in Full Case                                      | Implied      |
| 15 | O      | CATALOG_PAGE         | No longer Available - Displays 0                        | Implied      |
| 16 | P      | PIECE_WEIGHT         | Weight Per Piece in lbs.                                | 8.4          |
| 17 | Q      | SIZE_TYPE            | Internal Item Size Code                                 | Implied      |
| 18 | R      | SIZE_INDEX           | Product Size Identifier                                 | Implied      |
| 19 | S      | STEVES_GROUP         | No longer Available - Displays Unknown                  | 50           |
| 20 | T      | GTIN                 | Global Trade Item Number                                | 20           |
| 21 | U      | SALE_START_DATE      | Sale Start Date   | Implied      |
| 22 | V      | SALE_END_DATE        | Sale End Date   | Implied      |



## Shopify Website Formatted File

**sanmar\_shopify.csv:** Daily product data file including pricing and inventory for Shopify web stores.

## SanMar Shopify Data File

The Shopify file is produced daily with product information, suggested retail pricing, and inventory information.

### PLEASE NOTE:

- SanMar does NOT upload Shopify data files to customer's web stores. Please refer to Shopify for more information about uploading product CSV files. <https://docs.shopify.com/manual/your-store/products/import-products>
- SanMar is unable to customize or alter this file to meet individual web stores needs and takes NO responsibility for how the data and images are presented within your web store theme. You may need to consult the theme creator, a theme developer or use Apps to achieve your desired presentation or functionality, such as <https://apps.shopify.com/bulk-edit>, or many of the other App currently available for Shopify web stores at <https://apps.shopify.com/categories>. SanMar takes NO responsibility of ANY data or software problems that may be experienced within Shopify's web stores, themes, or Apps that are used in conjunction with our data.

### Known Issues:

- The Shopify system only allows 15MB uploads and our product data file is over 30MB in size. This makes it necessary for you to remove any unwanted products from the catalog and/or split the catalog into 2-3 separate data files.
- The Shopify Web Store system has a 100-variant maximum. Styles with many colors produce errors in the upload process and causes the entire style to fail and does not upload any data for that style.

**Error:** Line# - Line#:Validation failed: Exceeded maximum number of variants allowed

Due to this system limitation, this file is intended to be used with a plugin to increase the number of variants allowed per handle, such as the product customizer (<https://apps.shopify.com/product-customizer>) , or any plugin that will allow more than 100 variants per handle. Please consult Shopify for more information or suggestions at <https://docs.shopify.com/support>.

- Some image links may not resolve to an image, which also produces errors and causes the entire style to fail. If this occurs, the style will not be uploaded.

**Error:** Line# - LINE#: Validation failed: An error occurred while trying to download the image. We are working to correct this issue, but do not have a timeline for a resolution at this time

**sanmar\_shopify.csv:** SanMar Shopify File Field Names & Descriptions

| #  | COL | FIELD NAME                                | DESCRIPTION                                       |
|----|-----|---|---|
| 1  | A   | Handle                                    | Style Number                                      |
| 2  | B   | Title                                     | Product Title                                     |
| 3  | C   | Body (HTML)                               | Product Description                               |
| 4  | D   | Vendor                                    | Brand   |
| 5  | E   | Type                                      | Category  |
| 6  | F   | Tags                                      | No Data is included                               |
| 7  | G   | Published                                 | Published on Web Store. Default Value 'True'      |
| 8  | H   | Option1 Name                              | Default Value 'Color'                             |
| 9  | I   | Option1 Value                             | Product Color Name                                |
| 10 | J   | Option2 Name                              | Default Value 'Size'                              |
| 11 | K   | Option2 Value                             | Product Size                                      |
| 12 | L   | Option3 Name                              | No Data is included                               |
| 13 | M   | Option3 Value                             | No Data is included                               |
| 14 | N   | Variant SKU                               | No Data is included                               |
| 15 | O   | Variant Grams                             | The Product's Dozens Weight in Grams              |
| 16 | P   | Variant Inventory Tracker                 | Default Value 'shopify'                           |
| 17 | Q   | Variant Inventory Qty                     | Inventory is updated daily; Max Stock 1500 pieces |
| 18 | R   | Variant Inventory Policy                  | Default Value 'deny'                              |
| 19 | S   | Variant Fulfillment Service               | Default Value 'manual'                            |
| 20 | T   | Variant Price                             | Suggested Retail Pricing                          |
| 21 | U   | Variant Compare At Price                  | No Data is included                               |
| 22 | V   | Variant Requires Shipping                 | Default Value 'True'                              |
| 23 | W   | Variant Taxable                           | Default Value 'True'                              |
| 24 | X   | Variant Barcode                           | No Data is included                               |
| 25 | Y   | Image Src                                 | Front Model Image for the main product color      |
| 26 | Z   | Image Alt Text                            | No Data is included                               |
| 27 | AA  | Gift Card                                 | No Data is included                               |
| 28 | AB  | Google Shopping / MPN                     | No Data is included                               |
| 29 | AC  | Google Shopping / Age Group               | No Data is included                               |
| 30 | AD  | Google Shopping / Gender                  | No Data is included                               |
| 31 | AE  | Google Shopping / Google Product Category | No Data is included                               |
| 32 | AF  | SEO Title                                 | No Data is included                               |
| 33 | AG  | SEO Description                           | No Data is included                               |
| 34 | AH  | Google Shopping / AdWords Grouping        | No Data is included                               |
| 35 | AI  | Google Shopping / AdWords Labels          | No Data is included                               |
| 36 | AJ  | Google Shopping / Condition               | No Data is included                               |
| 37 | AK  | Google Shopping / Custom Product          | No Data is included                               |
| 38 | AL  | Google Shopping / Custom Label 0          | No Data is included                               |
| 39 | AM  | Google Shopping / Custom Label 1          | No Data is included                               |
| 40 | AN  | Google Shopping / Custom Label 2          | No Data is included                               |
| 41 | AO  | Google Shopping / Custom Label 3          | No Data is included                               |
| 42 | AP  | Google Shopping / Custom Label 4          | No Data is included                               |
| 43 | AQ  | Variant Image                             | Front Model Image for all Colors                  |
| 44 | AR  | Variant Weight Unit                       | Default Value 'lb'                                |

## Daily files created by request.

These are optional files that are provided by request and are exported daily after 2 AM PST to your FTP folder.

### Special Pricing Files

The daily pricing files is produced by request and exported nightly after 2 AM PST to your SanMar FTP Outbound folder.

#### Daily Incentive Pricing File [sanmar\\_dpIncentive.csv](#)

##### Daily CSV file with special program pricing

This Special Pricing file contains our entire catalog, but only displays your special pricing in the my\_price field or 0, if you do not have special pricing for that style.

#### Daily Pricing file [Sanmar\\_dp.csv](#)

##### Daily complete CSV file with your lowest price available

Our Daily Pricing file produces a daily file with pricing for our entire catalog and displays your lowest available price in the my\_price field. Both of the Daily and Daily Delta pricing files produce the lowest available pricing in the my\_price field. The Daily Delta file only has only the unique\_key and my\_price fields and is incrementally updated daily.

#### Daily Delta Pricing file [sanmar\\_dpc.csv](#)

##### Daily Partial CSV file with your lowest price available (Incremental daily changes)

Our Daily Delta Pricing file is a smaller partial file and displays your lowest available price in the my\_price field for only the product pricing that have changed since the day before. The first day that this pricing file is created it will produce my price for the entire product catalog, after which will only produce data for prices that have changed since the last day the file was exported.

**Comma delimited Data**

| #  | COL | FIELD ELEMENT              | DESCRIPTION  |
|----|-----|----------------------------|--|
| 1  | A   | <b>Inventory_Key</b>       | SanMar Product Identifier (combined with size index makes up for a unique product) |
| 2  | B   | <b>Size_Index</b>          | Product Size Identifier (combined with inventory makes up for a unique product)    |
| 3  | C   | <b>Catalog_No</b>          | SanMar Catalog Number e.g. K420  |
| 4  | D   | <b>Catalog_Color</b>       | Color of product   |
| 5  | E   | <b>Size</b>                | Size of product  |
| 6  | F   | <b>Piece_Weight</b>        | weight per piece in lbs.   |
| 7  | G   | <b>Piece_Price</b>         | Piece Price (1-5 Pieces)   |
| 8  | H   | <b>Dozens_Price</b>        | No longer Available - Displays Piece Price   |
| 9  | I   | <b>Case_Price</b>          | Case Price   |
| 10 | J   | <b>Case_Size</b>           | Pieces in a Case   |
| 11 | K   | <b>Each_sale_Price</b>     | Sale Price Per Piece (if on sale)  |
| 12 | L   | <b>Dozens_sale_price</b>   | No longer Available - Displays Piece Price (if on sale)                            |
| 13 | M   | <b>Case_sale_price</b>     | Sale Price Per Case (if on sale)   |
| 14 | N   | <b>Sale_start_datetime</b> | Sale Start Date (if on sale)   |
| 15 | O   | <b>Sale_end_datetime</b>   | Sale End Date (if on sale)   |
| 16 | P   | <b>Unique_key</b>          | Unique Product Identifier (INVENTORY_KEY+SIZE_INDEX combined)                      |
| 17 | Q   | <b>Discontinued_code</b>   | Discontinued Code S=SanMar or M=Mill - if product discontinued                     |
| 18 | R   | <b>My_price</b>            | Displays case pricing or sale price, if no TVBP pricing for an item                |

## Daily Shipment Status File (Advance Ship Notification)

The daily order status file is provided by request and provides daily order status and corresponding shipping information and is created nightly for all orders shipped that day. The file is then dropped into your FTP folder. The file contains line-item costs, associated charges, and the shipper tracking number.

### 1-15-16Status.txt - Tab Delimited Data

| #  | COLUMN | FIELD ELEMENT              | EXAMPLE                     |
|----|--------|----------------------------|-----------------------------|
| 1  | A      | CUSTOMER PO                | 123456                      |
| 2  | B      | SALESORDER#                | 18367163                    |
| 3  | C      | SHIP FROM                  | WEST CHESTER, OH            |
| 4  | D      | SHIP DATE                  | 11/20/2015                  |
| 5  | E      | SHIP TO NAME               | ABC CO                      |
| 6  | F      | ATTENTION                  | JOHN DOE                    |
| 7  | G      | SHIP TO ADDRESS1           | 123 MAIN ST                 |
| 8  | H      | SHIP TO ADDRESS2           | Suite 102                   |
| 9  | I      | SHIP TO CITY               | LONG ISLAND CITY            |
| 10 | J      | SHIP TO STATE              | NY                          |
| 11 | K      | SHIP TO ZIP                | 11101                       |
| 12 | L      | SHIP TO COUNTRY            | USA                         |
| 13 | M      | SUB TOTAL                  | 8.7                         |
| 14 | N      | FREIGHT                    | 8.4                         |
| 15 | O      | HANDLING FEE               | 3.95                        |
| 16 | P      | INVOICE TOTAL              | 56.84                       |
| 17 | Q      | TRACK NUM                  | 1ZE435930310783934          |
| 18 | R      | TOTAL CASES                | 1                           |
| 19 | S      | SHIP VIA                   | Not Used                    |
| 20 | T      | BOX NUMBER                 | 1                           |
| 21 | U      | STYLE                      | 2400B                       |
| 22 | V      | DESCRIPTION                | GILDAN 100% YOUTH L/S WHITE |
| 23 | W      | COLOR                      | White                       |
| 24 | X      | SIZE                       | L                           |
| 25 | Y      | QTY                        | 3                           |
| 26 | Z      | INVENTORY KEY              | 25852                       |
| 27 | AA     | SIZE ID                    | 4                           |
| 28 | AB     | LPN (License Plate Number) | LP0002488302                |

## Daily Invoice Text File

The Daily Invoice file is created upon request and the files are created nightly for all orders invoiced that day and are exported nightly to your FTP outbound folder after 12 PM PST.

### 123456\_Invoice\_Details-06-18-15.txt – Fixed Width Data

| CHARACTERS | CHARACTERS COUNT | FIELD NAME         | EXAMPLE                       |
|------------|------------------|--------------------|-------------------------------|
| 1-10       | 10               | Account Number     | 0000123456                    |
| 11-38      | 28               | Account Name       | Company Name                  |
| 39-47      | 9                | Invoice number     | 0583167000                    |
| 48-57      | 10               | Invoice Date       | 2019-06-18                    |
| 58-72      | 15               | Customer PO Number | PO NUMBER                     |
| 73-82      | 10               | Order Date         | 2019-06-18                    |
| 83-92      | 10               | Due Date           | 2019-07-18                    |
| 93-132     | 40               | Ship To Name       | ABC CO                        |
| 133-135    | 3                | Ship To State      | FL                            |
| 136-145    | 10               | Ship Date          | 2019-06-18                    |
| 146-157    | 12               | Freight Method     | Not Used                      |
| 158-169    | 12               | Terms              | NET 30                        |
| 170-179    | 10               | Unique Key         | Unique Key                    |
| 180-189    | 10               | Style No           | K500                          |
| 190-203    | 14               | Color              | Light Blue                    |
| 204-253    | 50               | Description        | PA SILK TOUCH POLO LIGHT BLUE |
| 254-257    | 4                | Size               | M                             |
| 258-263    | 6                | Pieces             | 000002                        |
| 264-273    | 10               | Price              | 00000007.49                   |
| 274-283    | 10               | Amount             | 000000014.98                  |
| 284-293    | 10               | Sales Tax          | 00000000.00                   |
| 294-303    | 10               | Shipping Handling  | 00000003.50                   |
| 304-313    | 10               | Total              | 000000018.48                  |
| 314-323    | 10               | Invoice Total      | 000000018.48                  |
| 324-332    | 9                | Sales Order #      | 0123456789                    |

### Daily Invoice Excel File

The Daily Invoice Excel file is created upon request and the invoice .XLSX file is emailed daily to your email address and contains all the invoices for the previous day's orders. Columns M-T may display multiple line items for each invoice.

| A          | B            | C          | D            | E              | F          | G          | H            | I             | J         | K              | L     | M          | N        | O              | P  | Q    | R      | S     | T      | U         | V                 | W             |
|------------|--------------|------------|--------------|----------------|------------|------------|--------------|---------------|-----------|----------------|-------|------------|----------|----------------|--|------|--------|-------|--------|-----------|-------------------|---------------|
| Account No | Account Name | Invoice No | Invoice Date | Customer PO No | Order Date | Due Date   | Ship To Name | Ship To State | Ship Date | Freight Method | Terms | Unique Key | Style No | Color          | Description                                  | Size | Pieces | Price | Amount | Sales Tax | Shipping Handling | Invoice Total |
| 12345      | TEST ACCOUNT | 56788      | 05/21/2024   | samplePO-1     |            | 06/20/2024 | Test Account | WA            |           | Not Used       | Net30 | 384044     | F281     | Black          | ST Super Hvywght Pullover Hoodie Sweatshirt  | L    | 1      | 22.99 | 22.99  | 0.00      | 0.00              | 31.48         |
|            |              |            |              |                |            |            |              |               |           |                |       | 1236933    | K110     | DeepBlack      | PA Dry Zone UV Micro-Mesh Polo               | M    | 1      | 8.49  | 8.49   |           |                   |               |
| 65124      | TEST ACCOUNT | 56789      | 05/21/2024   | samplePO-2     |            | 06/20/2024 | Test Account | WA            |           | Not Used       | Net30 |            |          |                |  |      |        |       |        | 0.00      | 0.00              | 226.82        |
|            |              |            |              |                |            |            |              |               |           |                |       | 230962     | L508     | Blk/LightStone | PA Wms S/S Easy Care Shirt                   | S    | 2      | 12.49 | 24.98  |           |                   |               |
|            |              |            |              |                |            |            |              |               |           |                |       | 230964     | L508     | Blk/LightStone | PA Wms S/S Easy Care Shirt                   | L    | 2      | 12.49 | 24.98  |           |                   |               |
|            |              |            |              |                |            |            |              |               |           |                |       | 230965     | L508     | Blk/LightStone | PA Wms S/S Easy Care Shirt                   | XL   | 2      | 12.49 | 24.98  |           |                   |               |
|            |              |            |              |                |            |            |              |               |           |                |       | 1238155    | LK110    | DeepBlack      | PA Wms Dry Zone UV Micro-Mesh Polo           | XL   | 1      | 8.49  | 8.49   |           |                   |               |
|            |              |            |              |                |            |            |              |               |           |                |       | 1061525    | LST652   | IronGrey/TRRed | ST Wms Colorblock Micropique Sport-Wick Polo | XL   | 1      | 12.49 | 12.49  |           |                   |               |
|            |              |            |              |                |            |            |              |               |           |                |       | 231142     | S508     | Blk/LightStone | PA S/S Easy Care Shirt                       | S    | 2      | 12.49 | 24.98  |           |                   |               |
|            |              |            |              |                |            |            |              |               |           |                |       | 231143     | S508     | Blk/LightStone | PA S/S Easy Care Shirt                       | M    | 2      | 12.49 | 24.98  |           |                   |               |
|            |              |            |              |                |            |            |              |               |           |                |       | 231144     | S508     | Blk/LightStone | PA S/S Easy Care Shirt                       | L    | 2      | 12.49 | 24.98  |           |                   |               |
|            |              |            |              |                |            |            |              |               |           |                |       | 231145     | S508     | Blk/LightStone | PA S/S Easy Care Shirt                       | XL   | 2      | 12.49 | 24.98  |           |                   |               |
|            |              |            |              |                |            |            |              |               |           |                |       | 231162     | S508     | Blk/LightStone | PA S/S Easy Care Shirt                       | 3XL  | 2      | 15.49 | 30.98  |           |                   |               |

### IT - Integration - Customer Invoice Details\_123456.xlsx

| COLUMN | FIELD NAME         | EXAMPLE                       |
|--------|--------------------|-------------------------------|
| A      | Account Number     | 123456                        |
| B      | Account Name       | Company Name                  |
| C      | Invoice number     | 58316700                      |
| D      | Invoice Date       | 6/18/2019                     |
| E      | Customer PO Number | PO NUMBER                     |
| F      | Order Date         | 6/18/2019                     |
| G      | Due Date           | 7/18/2019                     |
| H      | Ship To Name       | ABC CO                        |
| I      | Ship To State      | FL                            |
| J      | Ship Date          | 6/18/2019                     |
| K      | Freight Method     | Not Used                      |
| L      | Terms              | NET 30                        |
| M      | Unique Key         | Unique Key                    |
| N      | Style No           | K500                          |
| O      | Color              | Light Blue                    |
| P      | Description        | PA SILK TOUCH POLO LIGHT BLUE |
| Q      | Size               | M                             |
| R      | Pieces             | 2                             |
| S      | Price              | 7.49                          |
| T      | Amount             | 14.98                         |
| U      | Sales Tax          | 0                             |
| V      | Shipping Handling  | 3.5                           |
| W      | Total              | 18.48                         |
| X      | Invoice Total      | 18.48                         |

## EDI-810 Standard Daily Invoice File

Please call or email SanMar integrations to request our 810 Outbound Implementation Guide. We will need the following information to set up the delivery of your EDI-810 file.

Customer Name:

Customer Number:

EDI Number:

Current EDI qualifier:

Current element separator:

Interchange ID Qualifier:

VAN:

Server Connection: Direct to SanMar? OR Third-party Connection?

### 338469-201602090116-020834019-810.x12 Invoice sample

ISA\*00\* 00\* \*ZZ\*84863 \*12\*020834019

\*130628\*1514\*U\*00401\*000139642\*0\*T\*>~GS\*IN\*84863\*020834019\*20130628\*151433\*139661\*X\*004010~

ST\*810\*1141379~BIG\*20130628\*44209995\*20130628\*\*\*\*CN\*00~CUR\*BY\*USD~

N1\*BY\*Company Name~

N3\*2211 Customer AVE~SUITE 601~ N4\*SEATTLE\*WA\*98121\*USA~

N1\*SU\*SanMar Corporation~

N3\*22833 SE Black Nugget Road, Suite 130~ N4\*Issaquah\*WA\*98029\*USA~ N1\*ST\*Company Name~

N3\*2211 Customer AVE~SUITE 601~ N4\*SEATTLE\*WA\*98121\*USA~FOB\*PC\*ZZ~

IT1\*1\*-3\*EA\*9.99\*PE\*VN\*167592\*ZZ\*K420 - Athletic Gold - S~PID\*F\*\*\*\*PA Pique Knit Polos Athletic Gold S~ IT1\*2\*-

10\*EA\*9.99\*PE\*VN\*216181\*ZZ\*K420 - Blueberry - XS~PID\*F\*\*\*\*PA Pique Knit Polos Blueberry XS~ TDS\*-

10632~TXI\*ZZ\*13.31~SAC\*C\*D240\*\*\*\*1024\*\*\*\*\*Shipping Charges~CTT\*2~SE\*22\*1141379~

ST\*810\*1141380~BIG\*20130628\*44210000\*20130628\*\*\*\*DR\*00~CUR\*BY\*USD~

N1\*BY\*Company Name~

N3\*2211 Customer AVE~SUITE 601~ N4\*SEATTLE\*WA\*98121\*USA~

N1\*SU\*SanMar Corporation~

N3\*22833 SE Black Nugget Road, Suite 130~ N4\*Issaquah\*WA\*98029\* N1\*ST\*Company Name~ N3\*%CompanName\*7100

Customer DRIVE# D~ N4\*LOUISVILLE\*KY\*40258\*USA~FOB\*PC\*ZZ~

N9\*L1\*Freight Savings~MSG\*FREIGHT SAVINGS OF \$0.00~ IT1\*3\*10\*EA\*9.99\*PE\*VN\*92031\*ZZ\*K420 - Black -

XS~PID\*F\*\*\*\*PA Pique Knit Polos Black XS~

IT1\*4\*20\*EA\*9.99\*PE\*VN\*92032\*ZZ\*K420 - Black - S~PID\*F\*\*\*\*PA Pique Knit Polos Black S~

IT1\*5\*1\*EA\*9.99\*PE\*VN\*92033\*ZZ\*K420 - Black - M~PID\*F\*\*\*\*PA Pique Knit Polos Black M~

IT1\*6\*1\*EA\*9.99\*PE\*VN\*92034\*ZZ\*K420 - Black - L~PID\*F\*\*\*\*PA Pique Knit Polos Black L~

IT1\*7\*1\*EA\*9.99\*PE\*VN\*92035\*ZZ\*K420 - Black - XL~PID\*F\*\*\*\*PA Pique Knit Polos Black XL~

IT1\*8\*3\*EA\*9.99\*PE\*VN\*167592\*ZZ\*K420 - Athletic Gold - S~PID\*F\*\*\*\*PA Pique Knit Polos Athletic Gold S~

IT1\*9\*10\*EA\*9.99\*PE\*VN\*216181\*ZZ\*K420 - Blueberry - XS~PID\*F\*\*\*\*PA Pique Knit Polos Blueberry XS~

IT1\*10\*88\*EA\*9.99\*PE\*VN\*216182\*ZZ\*K420 - Blueberry - S~PID\*F\*\*\*\*PA Pique Knit Polos Blueberry S~



TDS\*141898~TXI\*ZZ\*80.32~CTT\*8~SE\*35\*1141380~  
ST\*810\*1141381~BIG\*20130628\*44210001\*20130628\*\*\*\*DR\*00~CUR\*BY\*USD~  
N1\*BY\*Company Name~  
N3\*2211 Customer AVE~SUITE 601~ N4\*SEATTLE\*WA\*98121\*USA~

N1\*SU\*SanMar Corporation~  
N3\*22833 SE Black Nugget Road, Suite 130~ N4\*Issaquah\*WA\*98029\*USA~

N1\*ST\*Company Name~ N3\*6415 NE Customer PLACE~  
N4\*KIRKLAND\*WA\*98034\*USA~FOB\*PC\*ZZ~  
N9\*L1\*Freight Savings~MSG\*FREIGHT SAVINGS OF \$0.00~

IT1\*11\*2\*EA\*9.99\*PE\*VN\*195991\*ZZ\*K420 - Classic Navy - XS~PID\*F\*\*\*\*PA Pique Knit Polos Classic Navy XS~  
IT1\*12\*1\*EA\*9.99\*PE\*VN\*195992\*ZZ\*K420 - Classic Navy - S~PID\*F\*\*\*\*PA Pique Knit Polos Classic Navy S~  
IT1\*13\*10\*EA\*9.99\*PE\*VN\*216181\*ZZ\*K420 - Blueberry - XS~PID\*F\*\*\*\*PA Pique Knit Polos Blueberry XS~  
IT1\*14\*20\*EA\*9.99\*PE\*VN\*216183\*ZZ\*K420 - Blueberry - M~PID\*F\*\*\*\*PA Pique Knit Polos Blueberry M~

TDS\*36099~TXI\*ZZ\*31.32~CTT\*4~SE\*27\*1141381~GE\*3\*139661~IEA\*1\*000139642~

## Change Log

### February 2025

- Updated Brand Restrictions Section.
- Updated guide formatting, added a complete Table of Contents.

### November 2024

- Updated Onboarding Guidance
- Updated Shopify inventory pieces displayed
- Updated Brand Restrictions Section.

### October 2024

- Updated Guidance for Fixed-Width Invoice File to include character count.

### July 2024

- Added Support for VA warehouse (31)
- Updated Brand Restrictions Section.

### April 2024

- Updated Brand Restrictions Section.
- Formatting Updates

### October 2023

- Updated Brand Restrictions Page Section

### June 2023

- Updated Brand Restrictions Section.
- Removed closeout Status references.

### December 2022

- Updated Brand Restrictions Section.
- Updated EPDD and SDL reference to show full file name.
- Updated EPDD and SDL with columns for GTIN and Decoration\_Spec\_Sheet

### August 2022

- Updated Invoice File to Include Sales Order #.
- Updated Brand Restrictions Page.

### June 2021

- Updated Shopify weight to reflect dozen's weight.

### May 2020

- Updated EDI 810-standard details: Removed Freight Saving Amount will now show \$0.00

- Updated Daily Status file: Invoice# is no longer used and will be replaced with SALESORDER# for tracking purposes.
- Updated Invoice Details File: Removed Freight Method data which now states NOT USED.
- Dozens pricing is no longer offered and will be replaced with piece pricing in all files.
- Added sanmar\_dip.txt and sanmar\_closeouts\_dip.txt files are updated hourly.

#### August 2019

- Removed data from legacy product text data files.

#### January 2019

- Removed Brand: District Made
- Added Brand: Carhartt
- Added License Plate Number to the Status file
- Added PMS Color Code to the EPDD and SDL CSV files

#### June 2018

- Update GTIN file name/location
- Added Brand: Bella+Canvas
- Added column information for the activeproductexport.txt file
- Added column information for the closeout\_activeproductexport.txt file

#### April 2018

- Added FRONT\_FLAT, BACK\_FLAT and MODEL\_BACK image URLs.
- Updated Brand Name NIKE GOLF to NIKE

#### December 2017

- Updated links to sanmar.com
- Updated Brand Restriction information

#### October 2017

- Updated links to sanmar.com
- Updated Brand Restriction information
- Added The North Face to Brand Restrictions
- Added Rabbit Skins to Brand Restrictions

#### April 2017

- Added more detailed information on the special pricing files.